

WhatsMinerTool Operation Guide

V9.0.3



Shenzhen MicroBT Electronics

Technology Co.,Ltd

1. Summary	3
2. Running environment	3
3. Tool main interface	3
4. Miner IP	5
4.1. Add the starting IP segment	5
4.2. Import IP	6
4.3. Export IP	6
4.4. Quickly save IP files	7
5. Scanning Miner	7
5.1. Filter lists by status	8
5.2. Filter list by model	8
6. Firmware upgrade	9
6.1. Select firmware files	9
6.2. Start to upgrade firmware	10
6.3. Firmware download link	10
7. Collocating pool	11
7.1. Setting before collocating pool	11
7.2. Start to collocate miner pools	12
7.3. Set Pool Only	12
8. Modify passwords	13
9. Configuration Of Permission	14
10. Remote Control	15
10.1. Restarting miner	15
10.2. Mining control	15
10.3. Switch hash rate mode	16
10.4. Restore Miner	16
10.5. Miner API	17
10.6. Power Fast Boot	17
10.7. Control the LED lights	18
10.8. Export log	18
10.9. Web page setting pools permission	19
10.10. Adjust Freq	20
10.11. protection mode (for water-cooled models only)	20

10.12.Adjust Upfreq Speed	21
10.13.Set Power Limit	22
10.14.Set NTP Server	23
10.15.Set Time Zone	23
11.Export data	24
12.Detect and set IP	24
12.1.Detect IP	24
12.2.Set Static IP	25
13. Setting windows	26
13.1.Set window function	26
13.2.Timed export data	27
14.Contact Us	28
15. Others	28

1. Summary

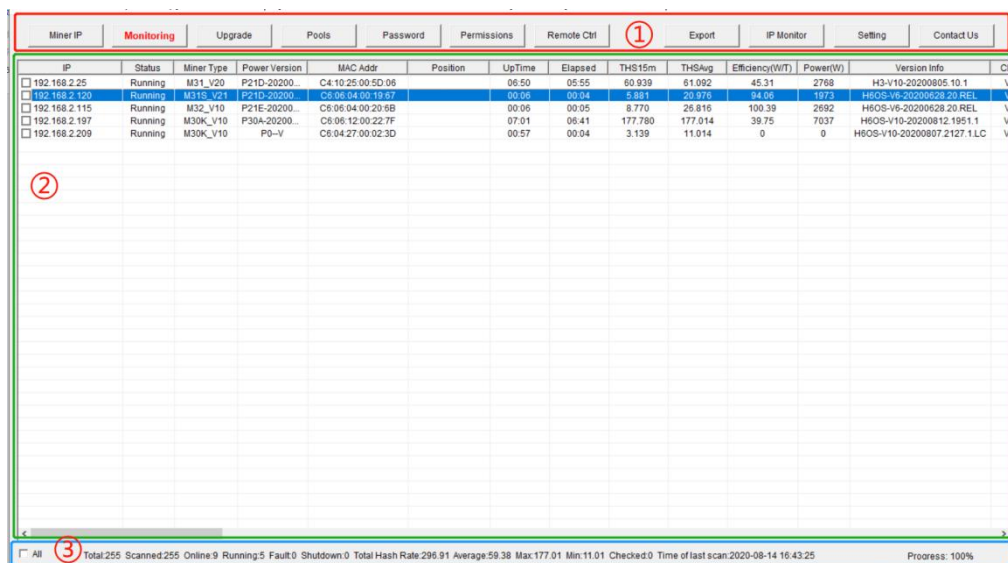
This article introduces the operating instructions of software WhatsMinerTool. The reader is expected to be the relevant personnel of mine operation and maintenance. Some functions only support firmware versions after 20230818.18.

2. Running environment

WhatsMinerTool can be run independently on a 64-bit system on PC Windows 7-8-10-11.

3. Tool main interface

After you run the WhatsMinerTool application, the main interface is displayed as follows:

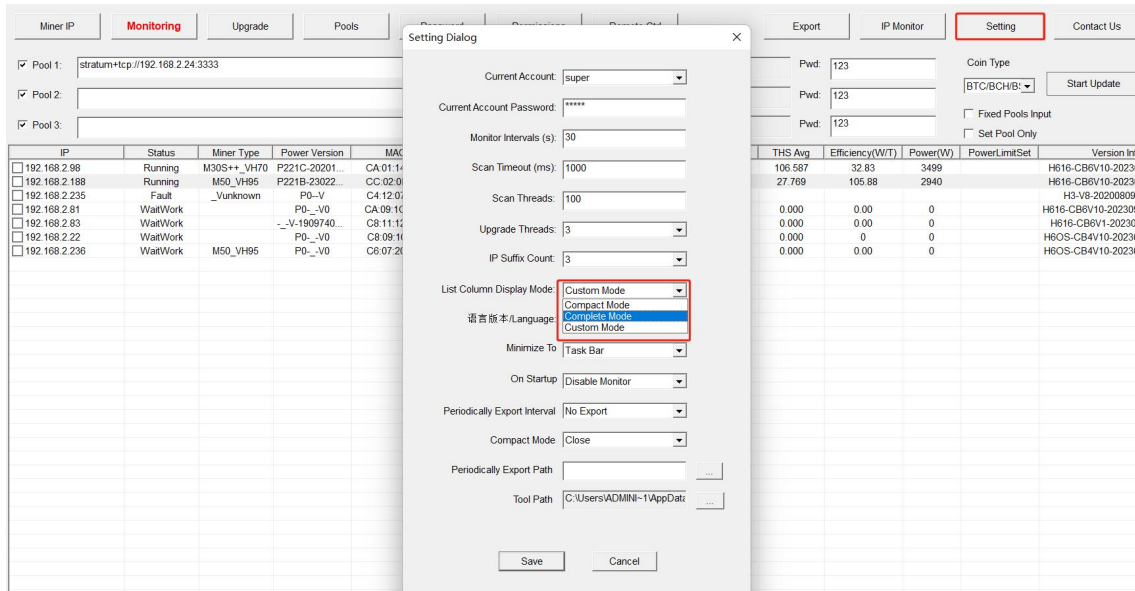


Miner IP	Status	Miner Type	Power Version	MAC Addr	Position	UpTime	Elapsed	THS15m	THS1d	Efficiency(WIT)	Power(W)	Version Info	Ch
192.168.2.25	Running	M21_V20	P21E-20200...	C4:10:25:00:5D:06		06:50	06:55	60.929	61.092	45.31	2768	H3-V10-20200805.10.1	V
192.168.2.120	Running	M31S_V24	P21E-20200...	C4:06:04:00:19:57		00:06	00:04	8.311	20.376	94.66	1176	H6OS-V6-20200628.20.REL	V
192.168.2.115	Running	M32_V10	P21E-20200...	C6:06:04:00:20:6B		00:06	00:05	8.770	26.816	100.39	2692	H6OS-V6-20200628.20.REL	V
192.168.2.197	Running	M30K_V10	P30A-20200...	C6:06:12:00:22:7F		07:01	06:41	177.780	177.014	39.75	7037	H6OS-V10-20200812.1951.1	V
192.168.2.209	Running	M30K_V10	P0-V	C6:04:27:00:02:3D		00:57	00:04	3.139	11.014	0	0	H6OS-V10-20200807.2127.1.LC	V

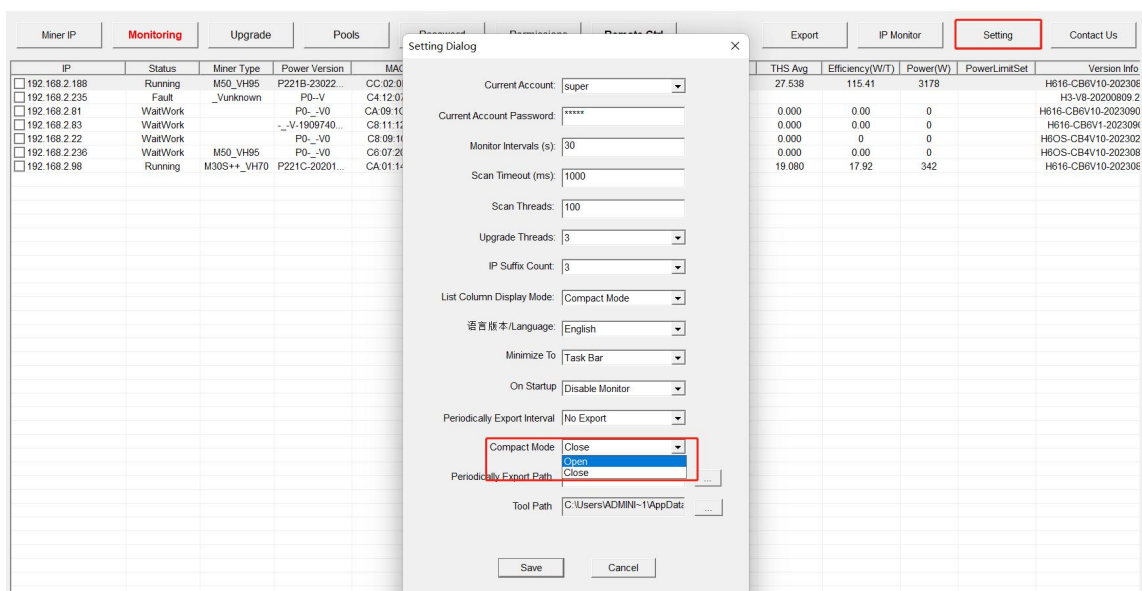
Of which:

- ① Inside the red box is the function selection area.
- ② Inside the green box is the Whatsminer list box.
- ③ Inside the blue box displays the status bar.

The configuration list display item right clicks in the space outside the Whatsminer list box and pops up the list options window from the data items displayed in the configuration list, as shown in the following figure:



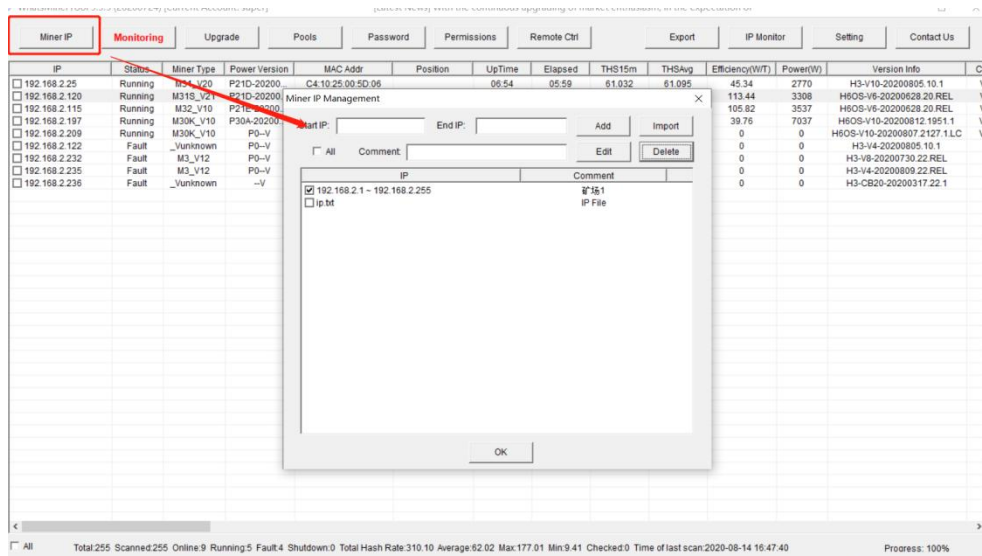
In the setting function, select to turn on or off Compact mode, which simplifies the functions of remote ctrl as follows: Reboot, Leds Control, Miner API Switch, Restore Miner, Export Log, Webs Pools Switch;



4. Miner IP

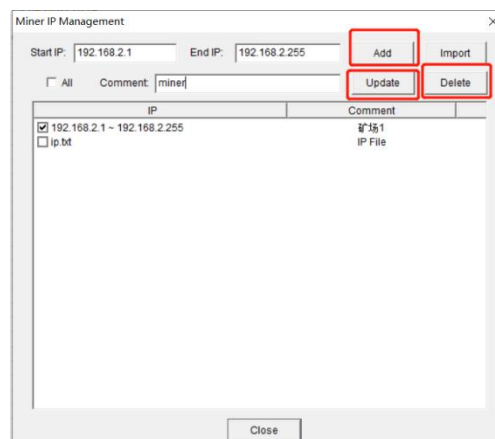
4.1. Add the starting IP segment

Click on the [Miner IP] button to pop up the Miner IP management window, as shown in the following figure:



Enter the corresponding IP segment in the Start IP and End IP input fields, and then click Add.

After the IP segment is selected, there will be a blue background color. and you can perform [Update] or [Delete] operation:

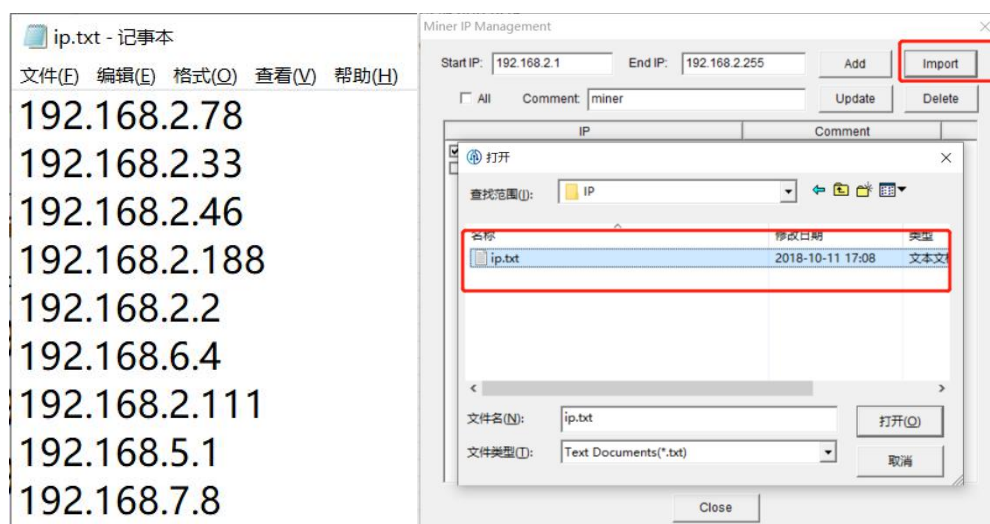


Note: check the left check box to indicate that the address section is in scan rang.

4.2.Import IP

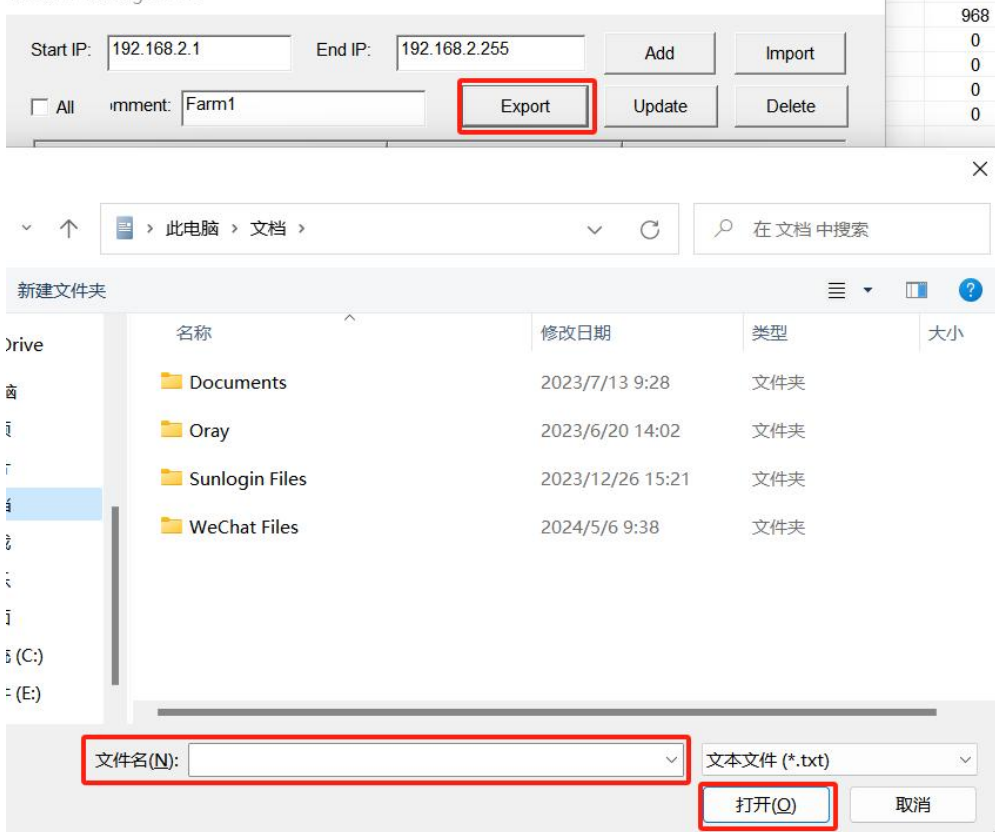
Click on the Import button, select the (txt format of the IP file you want to import in the popup box that appears), click Open:

Note: in the TXT text, IP must be 1 line and 1 sort.



4.3.Export IP

Click the [Export] button, enter the exported IP file name (.txt format) in the displayed pop-up box, and click [Open] to save the corresponding IP file.



4.4.Quickly save IP files

Multi-select the machine IP to be saved, right-click on the machine IP to save the currently selected IP to the IP list.



5.Scanning Miner

After you enter the IP section in the miner IP management window to save, click on the [Monitor] button, and the list box will list the online miner running status in the current scan address section, as shown in the following figure

Miner IP													
Monitor													
Upgrade													
Pools													
Password													
Permissions													
Remote Ctrl													
Export													
IP Monitor													
Setting													
Contact Us													
IP	Status	Miner Type	Power Version	MAC Addr	Position	UpTime	Elapsed	THS15m	THSAvg	Efficiency(W/T)	Power(W)	Version Info	Cr
<input type="checkbox"/> 192.168.2.25	Running	M31_V20	P21D-20200...	C4:10:25:00:5D:06		07:05	06:10	61.095	61.096	45.37	2772	H3-V10-20200805.10.1	V
<input type="checkbox"/> 192.168.2.209	Running	M31_V20	P21D-20200...	C3:0C:01:00:6D:17		07:11	06:05	61.095	61.096	45.37	2772	H3-V10-20200805.10.1	V
<input type="checkbox"/> 192.168.2.115	Running	M32_V10	P21E-20200...	C8:96:04:00:20:5B		00:22	00:20	27.225	35.270	98.50	3474	H6OS-V6-20200628.20.REL	V
<input type="checkbox"/> 192.168.2.197	Running	M30K_V10	P30A-20200...	C6:06:12:00:22:7F		07:16	06:56	176.994	177.001	39.88	7059	H6OS-V10-20200812.1951.1	V
<input type="checkbox"/> 192.168.2.209	Running	M30K_V10	P30-V	C6:04:27:00:02:3D		01:12	00:06	7.581	21.899	0	0	H6OS-V10-20200807.2127.1.LC	V

Note: scan details can be referred to the bottom window status bar, scan can be stopped at any time.

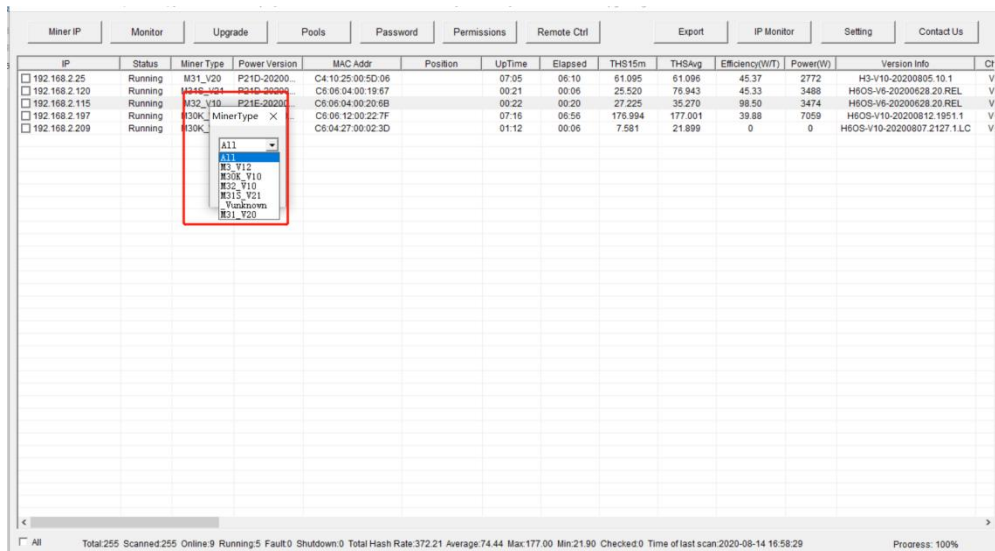
5.1.Filter lists by status

Right-click anywhere outside the "Miner Type" column in the miner status list box, and the tool will display the "Status Options" bullet box, as follows:

Miner IP													
Monitor													
Upgrade													
Pools													
Password													
Permissions													
Remote Ctrl													
Export													
IP Monitor													
Setting													
Contact Us													
IP	Status	Miner Type	Power Version	MAC Addr	Position	UpTime	Elapsed	THS15m	THSAvg	Efficiency(W/T)	Power(W)	Version Info	Cr
<input type="checkbox"/> 192.168.2.25	Running	M31_V20	P21D-20200...	C4:10:25:00:5D:06		07:05	06:10	61.095	61.096	45.37	2772	H3-V10-20200805.10.1	V
<input type="checkbox"/> 192.168.2.120	Running	M31_V20	P21D-20200...	C8:96:04:00:19:67		00:21	00:06	25.520	76.943	45.33	3488	H6OS-V6-20200628.20.REL	V
<input type="checkbox"/> 192.168.2.115	Running	M32_V10	P21E-20200...	C8:96:04:00:20:5B		00:22	00:20	27.225	35.270	98.50	3474	H6OS-V6-20200628.20.REL	V
<input type="checkbox"/> 192.168.2.197	Run Status	P30A-20200...	C6:06:12:00:22:7F			07:16	06:56	176.994	177.001	39.88	7059	H6OS-V10-20200812.1951.1	V
<input type="checkbox"/> 192.168.2.209	Run	P30-V	C6:04:27:00:02:3D			01:12	00:06	7.581	21.899	0	0	H6OS-V10-20200807.2127.1.LC	V

5.2.Filter list by model

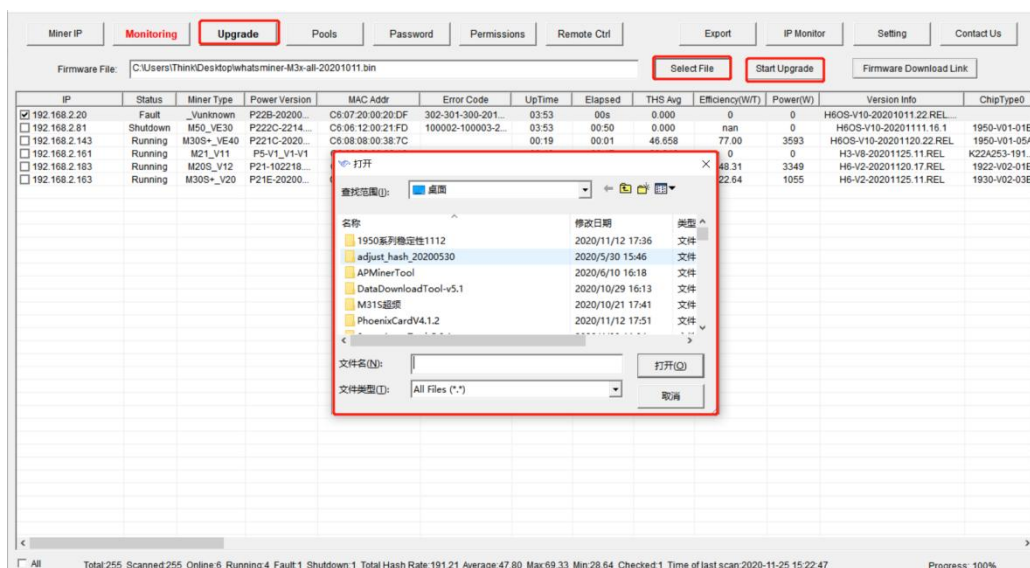
In the miner status list box, right-click on the "Miner Type" column, the tool will display the "Miner type" bullet box, as follows:



6. Firmware upgrade

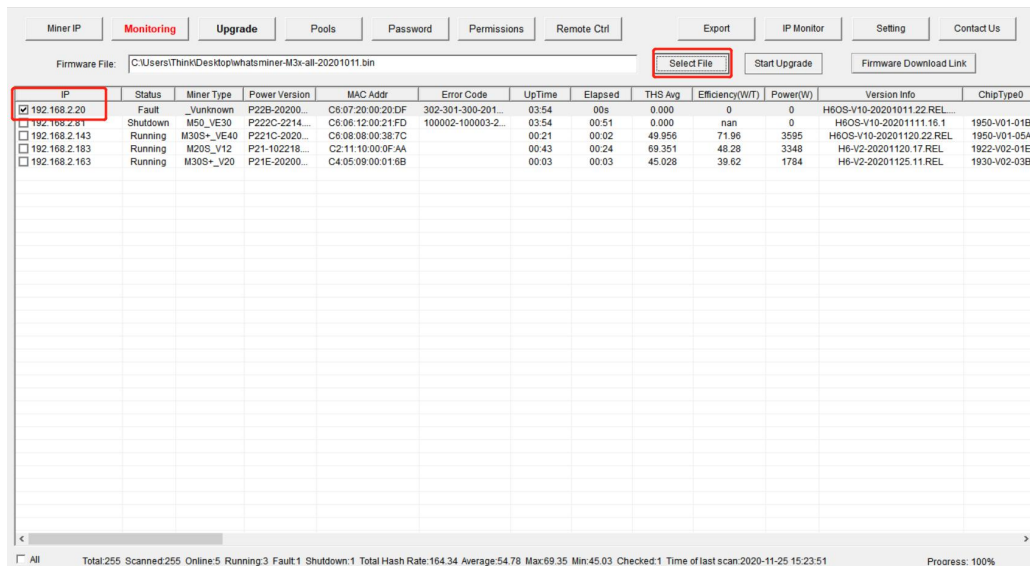
6.1. Select firmware files

Click on the [Upgrade] button, click on the [Select Firmware] button and select the firmware file to upgrade in the bullet-box displayed, as follows:



6.2.Start to upgrade firmware

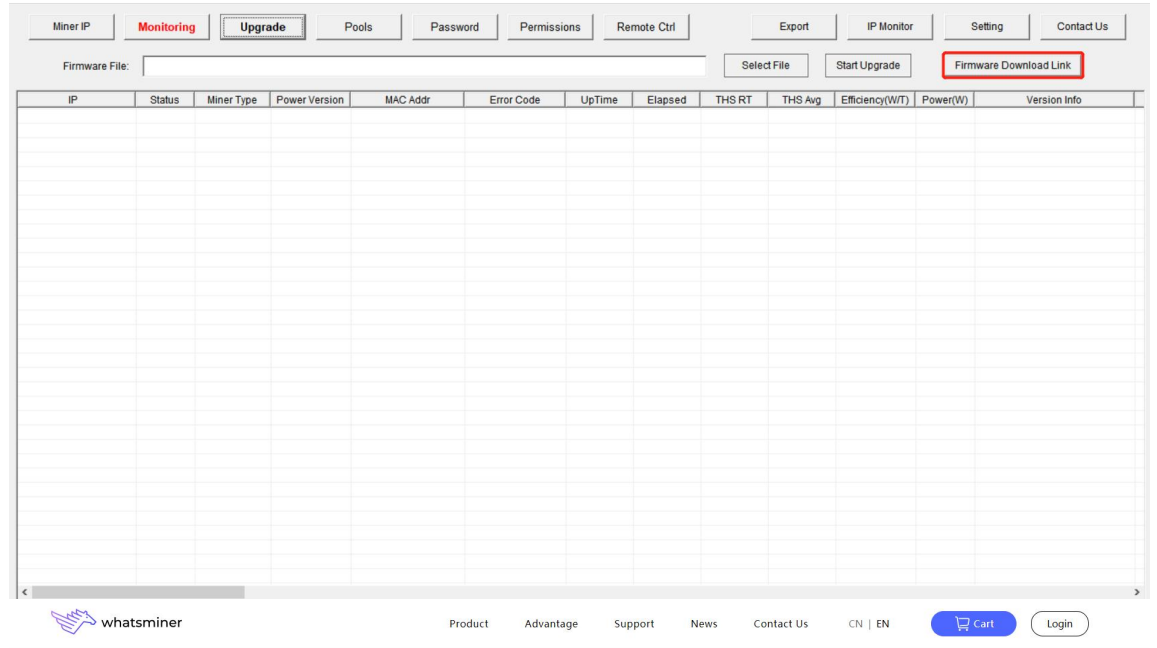
Select the firmware file, check the IP of the miner to be upgraded, and click on the [Start Upgrade] button to upgrade, as follows:



When the dialog box pops up, click the OK button. The status shows "success" and the upgrade is successful; otherwise, it shows "failure".

6.3.Firmware download link

Click the firmware download link, and the browser will automatically jump to the firmware download site of the official website, as shown below:



Support > Technical Support

Firmwares Download

Tools Download

Documents Download

Firmware

M5x & M3x series

M2x series

M10 & D1 series

M3

SD-card flashing program

H60s control board

H616 control board

H3 control board

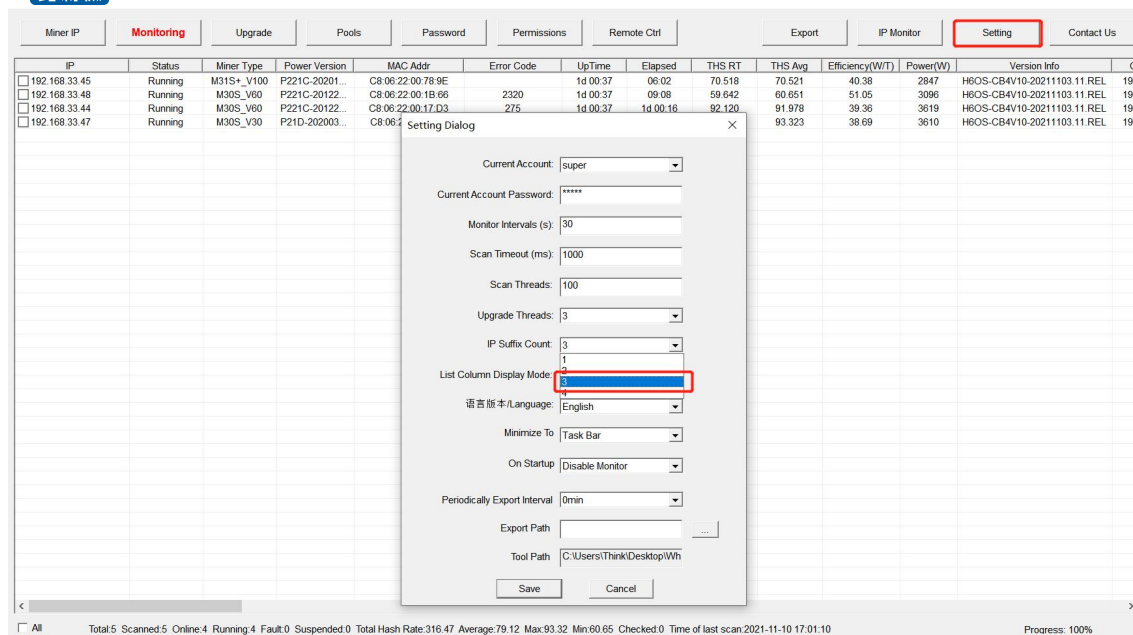
H6 control board

File Name	File Size	Instruction	Update time	Operation
Whatsminer-M3x&M5X-all-20220512.17.bin	20MB	1. Applicable mode 1.1 M50x, M31S, M30x, M32 etc.; 1.2 High mode can be only supported by M30X series, also require the input voltage over than 230VAT; 2. New version highlights 2.1 Support Pool TLS safety transportation protocol; 2.2 Support Low mode on M3X_VE; M3X_VF series; 2.3 Strengthen the safety of firmware: device will reboot 2 times during upgrading, the version name will be end with 'NeedUpgradeAgain' at 1st time, please wait for 2nd reboot, after that it will be changed to target version; 2.4 Fixing other bugs; 2.5 Online upgrading to version earlier than 20210602 is prohibit, need to match with tool whatsminertool-8.1.26 ; 2.6 The WhatsMiner API version is V2.0.4; Put Away ^	2022.2.9	Download

7. Collocating pool

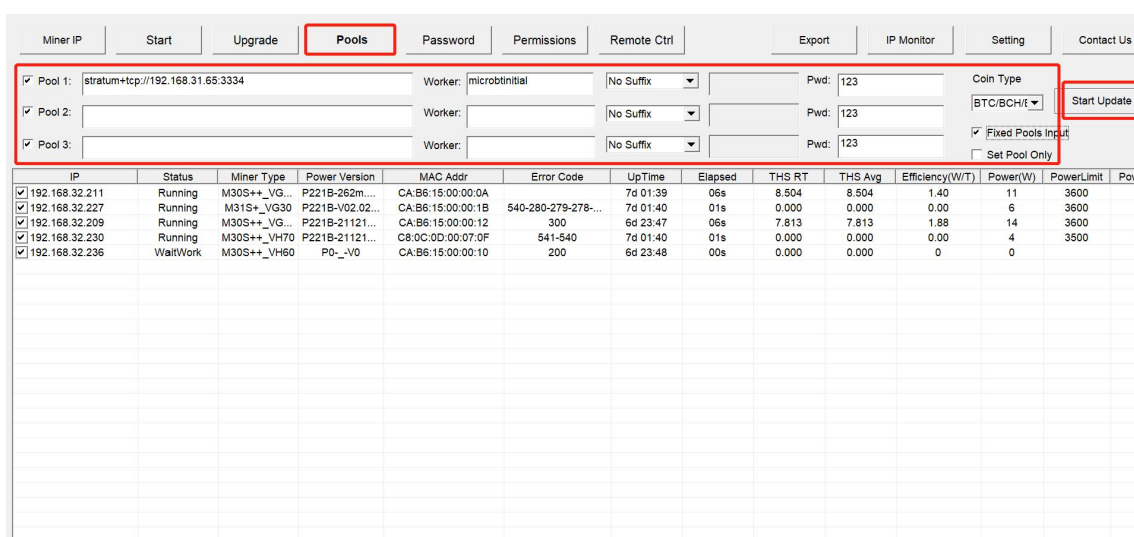
7.1. Setting before collocating pool

Click on the [Settings] button to pop up the settings window. The number of IP suffixes for miners can be selected from 1 to 4. Other options can be configured according to the needs. Configuration is completed by clicking the [Save] button to save. The following figure is as follows:



7.2.Start to collocate miner pools

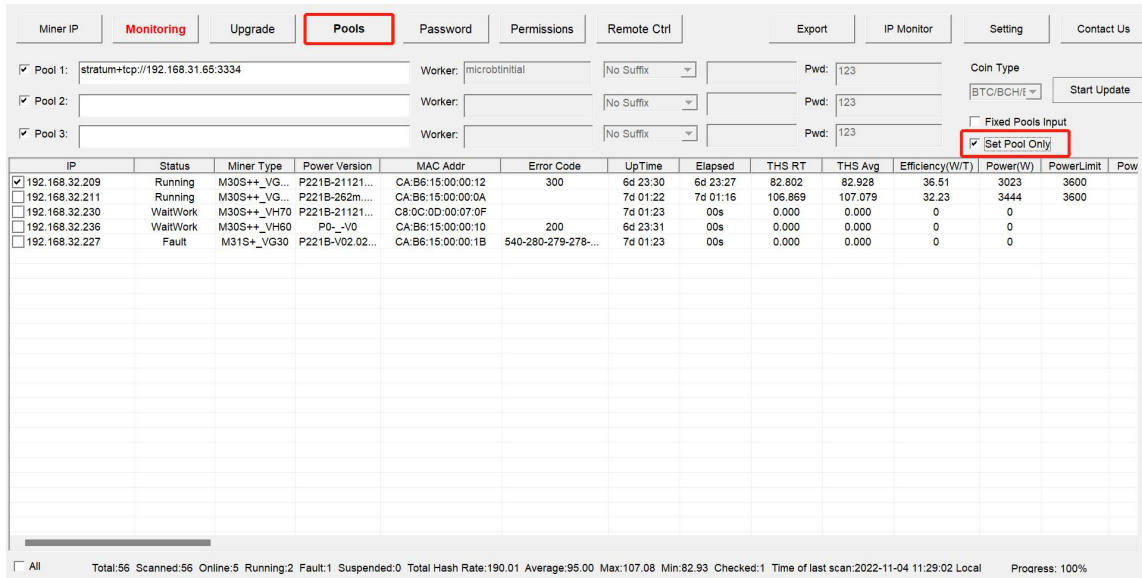
Click on the [Pools] button, edit the miner address, worker, Choose miner suffix form, select the miner's currency, then select the miner's IP that needs to be configured, click on the [Start Upgrade] button, tick the [Fixed Pools] button to lock the Miner you have set up at present, as follows:



When the dialog box pops up, click OK.

7.3.Set Pool Only

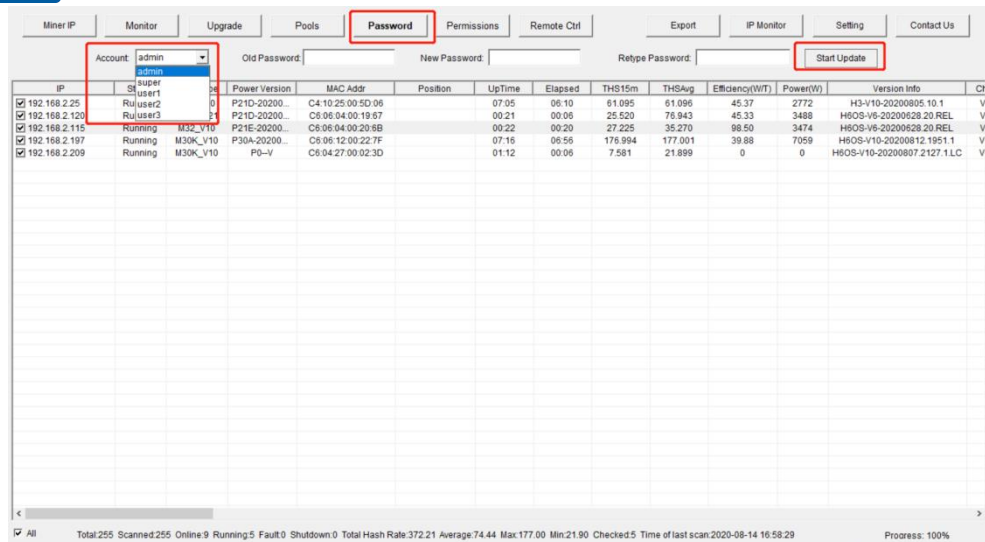
Click the 【Set Only Pool】 button. Worker, password, Worker suffix, currency selection and other functions cannot be configured, only Pool can be configured, as shown below:



IP	Status	Miner Type	Power Version	MAC Addr	Error Code	UpTime	Elapsed	THS RT	THS Avg	Efficiency(W/T)	Power(W)	PowerLimit	Pow
<input checked="" type="checkbox"/> 192.168.32.209	Running	M30S++_VG...	P221B-21121...	CA:B6:15:00:00:12	300	6d 23:30	6d 23:27	82.802	82.828	36.51	3023	3600	
<input type="checkbox"/> 192.168.32.211	Running	M30S++_VG...	P221B-262m...	CA:B6:15:00:00:0A		7d 01:22	7d 01:16	106.869	107.079	32.23	3444	3600	
<input type="checkbox"/> 192.168.32.230	WaitWork	M30S++_VH70	P221B-21121...	CS:0C:0D:00:07:0F		7d 01:23	00s	0.000	0.000	0	0		
<input type="checkbox"/> 192.168.32.236	WaitWork	M30S++_VH60	P0_-V0	CA:B6:15:00:00:10	200	6d 23:31	00s	0.000	0.000	0	0		
<input type="checkbox"/> 192.168.32.227	Fault	M31S+_VG30	P221B-V02.02...	CA:B6:15:00:00:1B	540-280-279-278...	7d 01:23	00s	0.000	0.000	0	0		

8.Modify passwords

Check the miner IP, click on the [Password] button, select admin or super, user1, user2, user3, then enter the old password (the default password is the same as the account number), then enter the new password, and click on the [Start Upgrade] button, as follows:



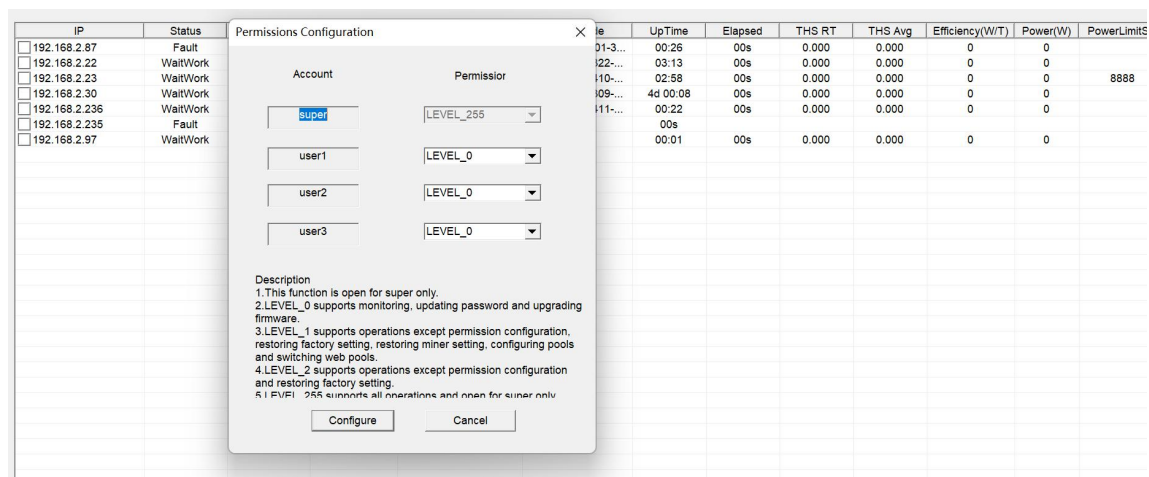
9. Configuration Of Permission

Add a super administrator and a normal administrator account on WhatsminerTool. The super administrator can configure permissions for the general administrator.

Click on the [Permissions] button to configure different privileges for three general administrator accounts.

To do this, you need to log in to the super super administrator account. At present, the login account can be viewed in the upper left corner of the tool.

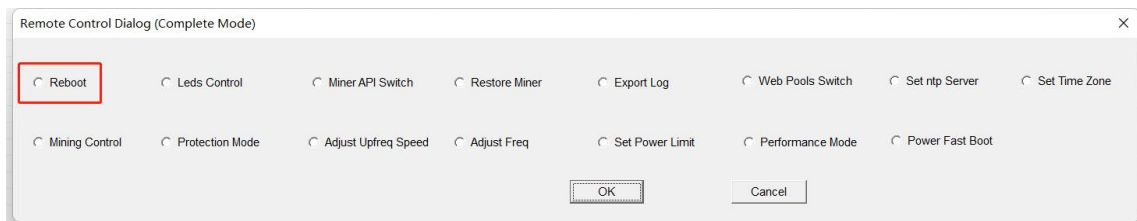
By default, the super super administrator account can be logged in to perform all operations on the miner. To login to other accounts, click Login at Setting.



10.Remote Control

10.1.Restarting miner

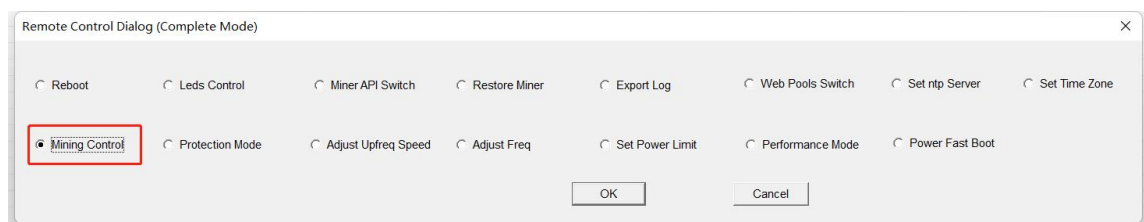
Check the miner IP, click on the [Remote Ctrl] button, select "Reboot" in the pop-up dialog box, and then click on the [OK] button, as shown in the following figure:

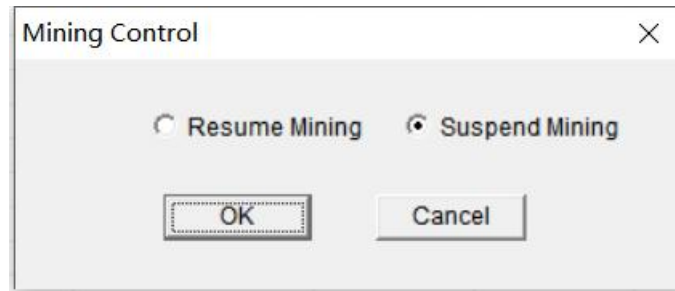


When the dialog box pops up, click the OK button.

10.2.Mining control

Click the "remote Control" button on the IP, of the sorting machine, select "Mining Control" in the pop-up dialog box, and then click the "OK" button. Note that M3 and other early machines are not supported when the mining machine is turned off, as shown in the following figure:

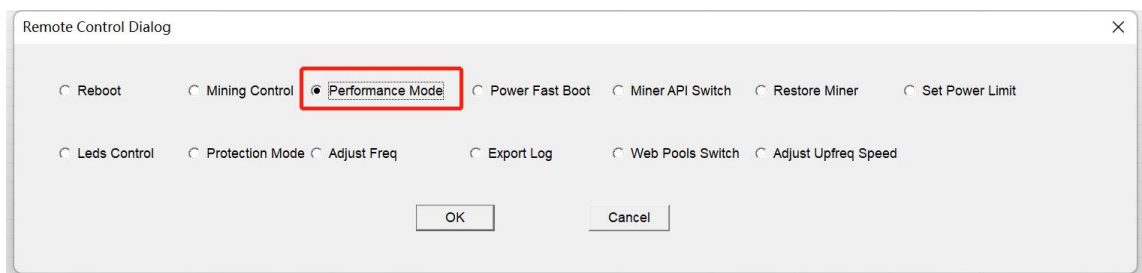




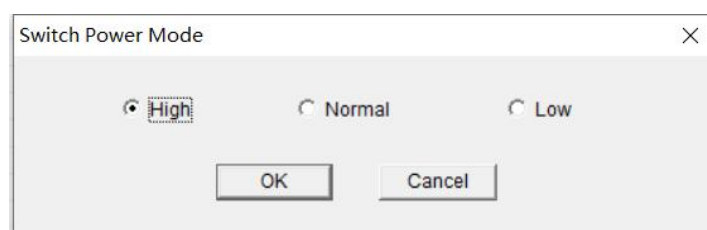
After the selection, a pop-up window will pop up to choose to resume mining and stop mining. Select one and press OK to switch the mining mode.

10.3.Switch hash rate mode

Check the IP of the mining machine, click the "remote Control" button, select "switch performance Mode" in the pop-up dialog box, and then click the "OK" button. **Note that the function of switching arithmetic mode does not support M3 and other early mining machines.**



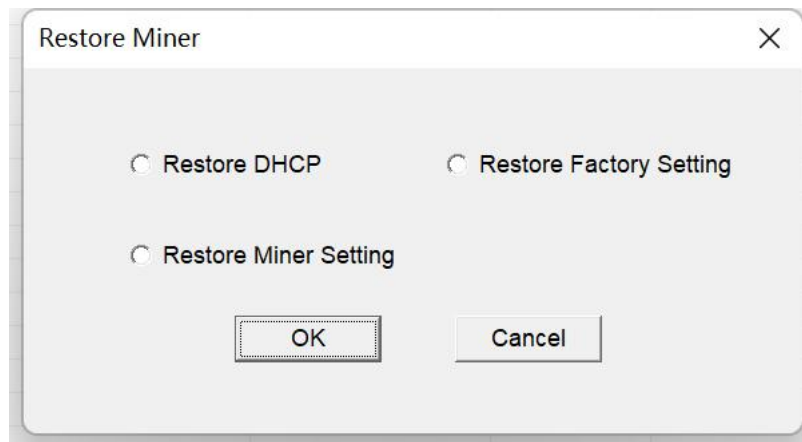
After selection, a pop-up window will pop up. Select one and press Select to switch the force calculation mode. Note: at present, the high-performance mode only supports m30s series and the voltage requirement is more than 230V, as shown below:



10.4.Restore Miner

Check the miner IP, click on the [Remote Ctrl] button, select "Restore Miner" in the

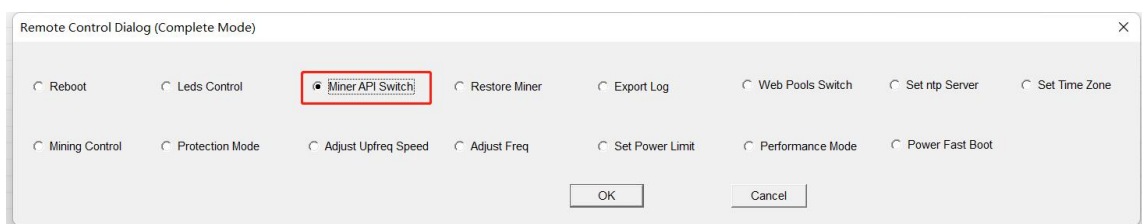
pop-up dialog box, and then choose the desired operation, such as Restore DHCP, Restore miner setting, Restore factory setting, etc. Finally, click the 'OK' button, as shown in the following figure.:



After selecting the desired operation, the miner will Restore DHCP, Restore miner setting, or Restore factory setting.

10.5.Miner API

Check the miner IP, click on the [Remote Ctrl] button, select the "Miner API Switch" in the pop-up dialog box, and then click on the select button, as follows:

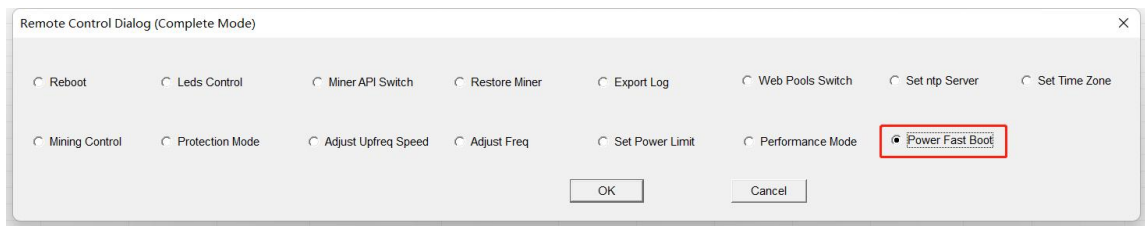


After opening the API switch, you can use the API interface to obtain various states of the miner and modify the parameters of the miner.

You need to upgrade to the official version 20200801 and later.

10.6.Power Fast Boot

Check the miner IP, click on the [Remote Ctrl] button, select the "Power Fast Boot" in the pop-up dialog box, and then click on the select button, as follows:

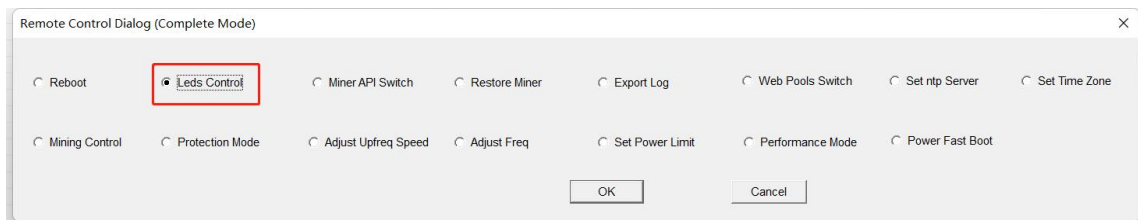


After restarting the machine, the load of the mining machine can quickly reach the rated load within one minute in the start-up stage, and the load fluctuation can be reduced.

Need to upgrade to the official firmware version 20200801 and later, and only support M30 series

10.7. Control the LED lights

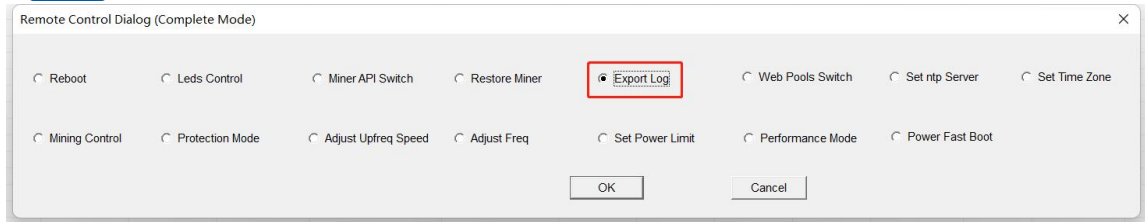
IP, click the "remote Control" button, select "Traffic Light Flash" in the pop-up dialog box, and then click "OK" button, as shown below:



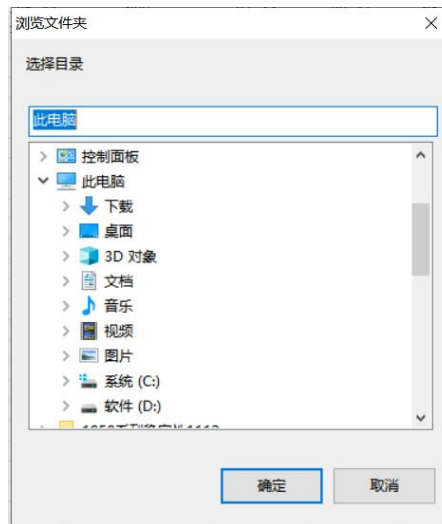
After the completion of the operation, the traffic light of the selected mining machine will flash quickly to facilitate the rapid and accurate positioning of the mining machine. After selecting [normal traffic light], the traffic light of the mining machine will return to the normal state before.

10.8. Export log

Check the miner IP, click on the [Remote Ctrl] button, select the "ExportLog" Switch in the pop-up dialog box, and then click OK, as shown below:



In the pop-up dialog box, choose to save the exported log as a file directory. As shown below:

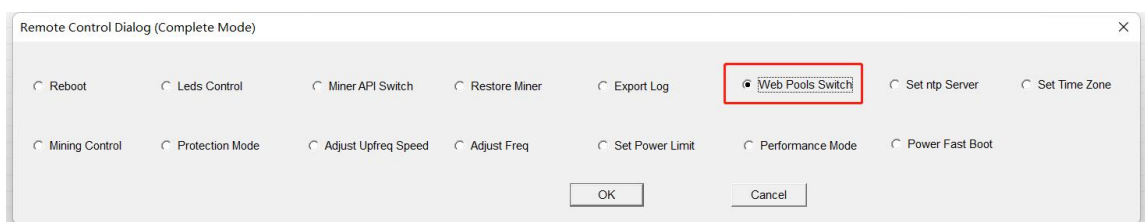


The log contains upfreq_test.log、 power.log、 Miner.log、 system.log、 api.log

upfreq_test.log	9.46 MB	995.11 KB
system.log	296.54 KB	30.48 KB
power.log	741.59 KB	76.16 KB
miner.log	15.85 KB	1.64 KB
api.log	107.69 KB	11.08 KB

10.9.Web page setting pools permission

Check the miner IP, click on the [Remote Ctrl] button, select the "Web Pools Switch" in the pop-up dialog box, and then click the [OK] button, as follows:

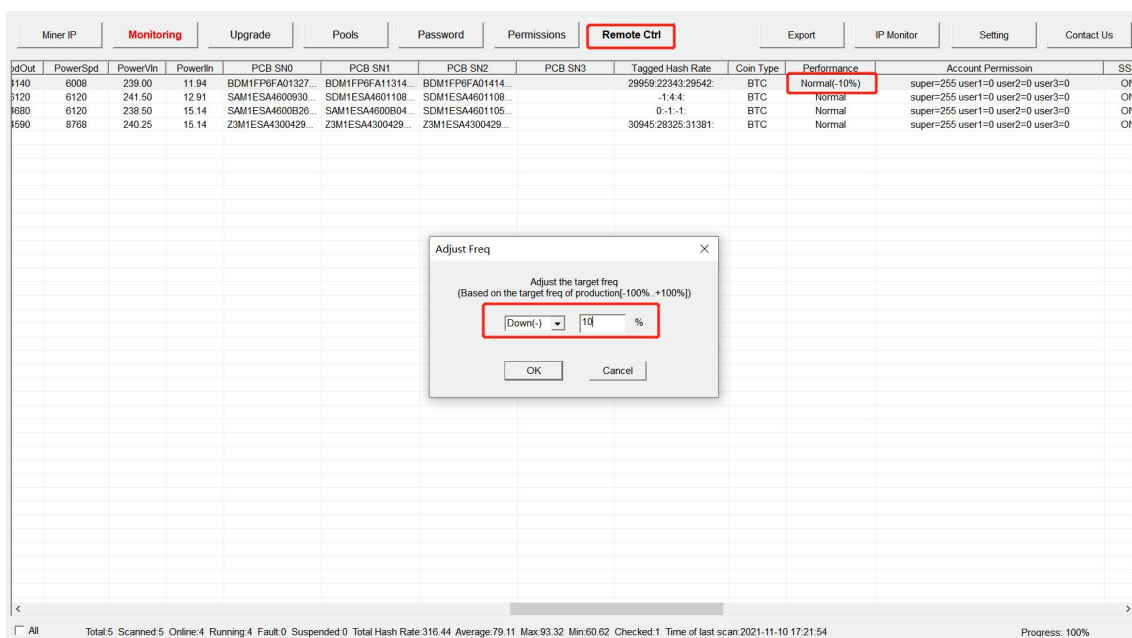


In the pop-up window, you can display or hide the modified mine page in the background of the web page by selecting either Enabling Web Pool Function or Disabling Web Pool Function.



10.10.Adjust Freq

Set the machine frequency adjustment percentage, and the up-up frequency only supports liquid-cooled machines; each adjustment frequency is based on the target frequency; the down-regulation frequency is shown in the following figure:



The screenshot shows the "Monitoring" tab in the software interface. The "Remote Ctrl" button is highlighted. The "Adjust Freq" dialog box is open, showing the "Down(-)" dropdown menu and the "10" percentage input field. The dialog box text reads: "Adjust the target freq (Based on the target freq of production[-100% ~100%])".

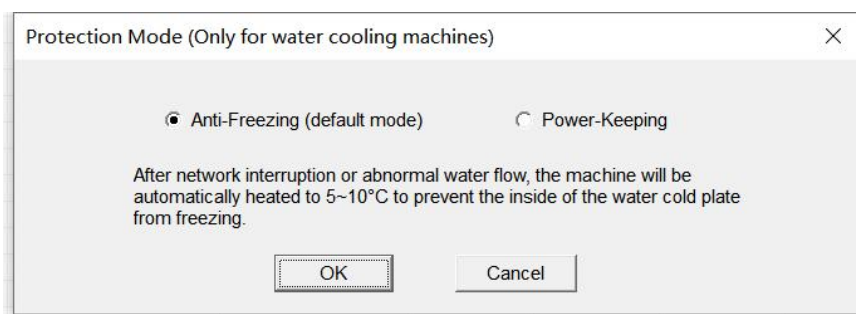
Miner IP	PowerSpd	PowerVin	PowerIn	PCB SN0	PCB SN1	PCB SN2	PCB SN3	Tagged Hash Rate	Coin Type	Performance	Account Permission	SSI
1140	6008	239.00	11.94	BDM1FP8FA01327...	BDM1FP8FA11314...	BDM1FP8FA01414...		29959.22343.29542	BTC	Normal(-10%)	super=255 user1=0 user2=0 user3=0	ON
1120	6120	241.50	12.91	SAM1ESA4600930...	SDM1ESA4601108...	SDM1ESA4601108...		1:4:4	BTC	Normal	super=255 user1=0 user2=0 user3=0	ON
1680	6120	238.50	15.14	SAM1ESA4600826...	SAM1ESA4600804...	SDM1ESA4601105...		0-1-1	BTC	Normal	super=255 user1=0 user2=0 user3=0	ON
1590	8768	240.25	15.14	Z3M1ESA4300429...	Z3M1ESA4300429...	Z3M1ESA4300429...		30945.28325.31381	BTC	Normal	super=255 user1=0 user2=0 user3=0	ON

At the bottom of the interface, there is a status bar showing: "Total:5 Scanned:5 Online:4 Running:4 Fault:0 Suspended:0 Total Hash Rate:316.44 Average:79.11 Max:93.32 Min:60.62 Checked:1 Time of last scan:2021-11-10 17:21:54 Progress: 100%"

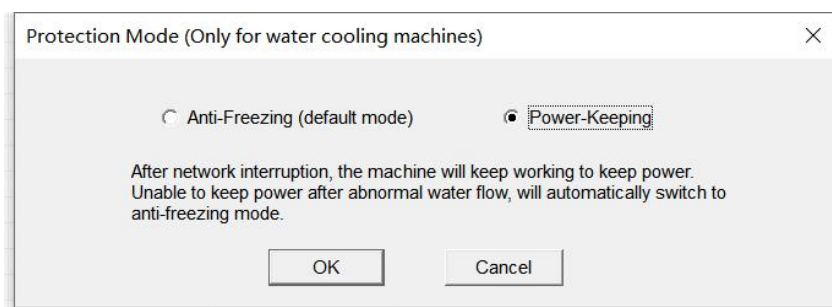
After the operation is completed, the selected machine displays the percentage of up / down actions corresponding to [performance Mode].

10.11.protection mode (for water-cooled models only)

Switch to anti-Freezing mode. After network disconnection or abnormal flow, the machine is automatically heated to 5-10 °C to prevent ice from being added inside the water-cooled version. The machine defaults to anti-Freezing mode, as shown below:



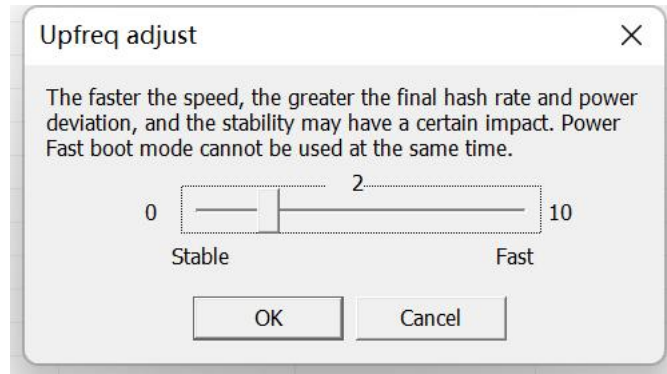
Switch the power-Keeping mode, and the machine will continue to work to maintain the power after the disconnection; if the water flow is abnormal, it will automatically switch to the anti-icing mode, as shown below:



After the switch is successful, you can check the confirmation in the tool data list item heating mode.

10.12.Adjust Upfreq Speed

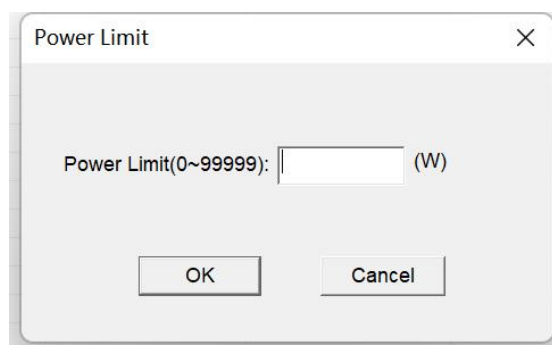
Check the miner IP, click the "remote Ctrl" button, select "Adjust Upfreq Speed" in the pop-up dialog box, select the Upfreq speed to be set, and then click "OK" button as shown below:



Frequency adjustment range: [0~10]; function: 0 indicates normal frequency search speed. The larger the number is, the faster the frequency search speed is. Stability may have an impact.

10.13.Set Power Limit

Check the miner IP, click the "remote Ctrl" button, select "Set Power Limit" in the pop-up dialog box, enter the power number [0~99999], (do not exceed the machine factory power, otherwise it will not take effect) the software automatically takes the valid value, and then click the "OK" button, as shown below:

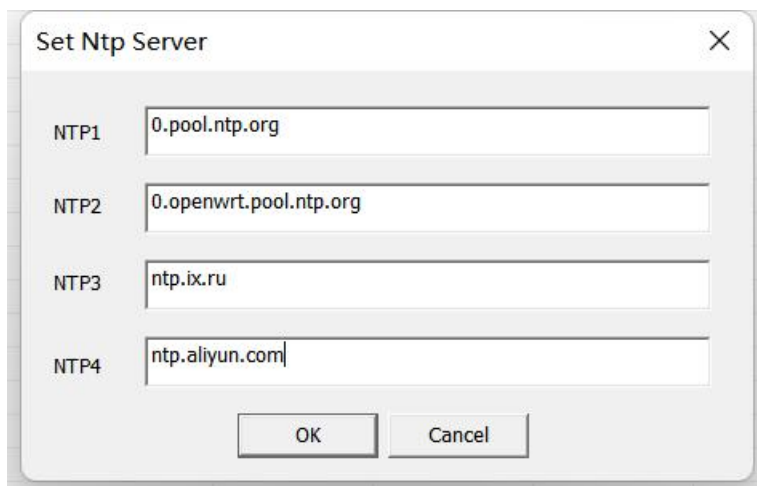


After the operation is completed, the selected machine displays its set value corresponding to "Set Power limit", and the "Power limit" displays the actual value of the machine, as shown below:

Miner Type	Power Version	MAC Addr	Error Code	UpTime	Elapsed	THS RT	THS Avg	Efficiency(W/T)	Power(W)	PowerLimit	PowerLimitSet	Version Info
M30S++_VG...	P221B-262m...	CA:B6:15:00:00:0A		7d 01:39	06s	8.504	8.504	1.40	11	3600	4000	H616-CB6V12-20221027.11.R
M31S+_VG30	P221B-V02.02...	CA:B6:15:00:00:1B	540-280-279-278...	7d 01:40	01s	0.000	0.000	0.00	6	3600		H616-CB6V12-20221027.11.R
M30S++_VG...	P221B-21121...	CA:B6:15:00:00:12	300	6d 23:47	06s	7.813	7.813	1.88	14	3600		H616-CB6V12-20221028.11.R
M30S++_VH70	P221B-21121...	C8:0C:0D:00:07:0F	541-540	7d 01:40	01s	0.000	0.000	0.00	4	3500		H616-CB6V10-20221027.11.R
M30S++_VH50	PC_V0	CA:B6:15:00:00:10	200	6d 23:48	00s	0.000	0.000	0	0			H616-CB6V12-20221028.11.R

10.14.Set NTP Server

Check the machine IP, and click the "Set NTP Server" button. In the pop-up dialog box, you can modify or add the ntp server address to the local ntp server address according to the situation of the mine, as shown below:



The dialog box titled "Set Ntp Server" contains four input fields labeled NTP1, NTP2, NTP3, and NTP4. Below the fields are "OK" and "Cancel" buttons.

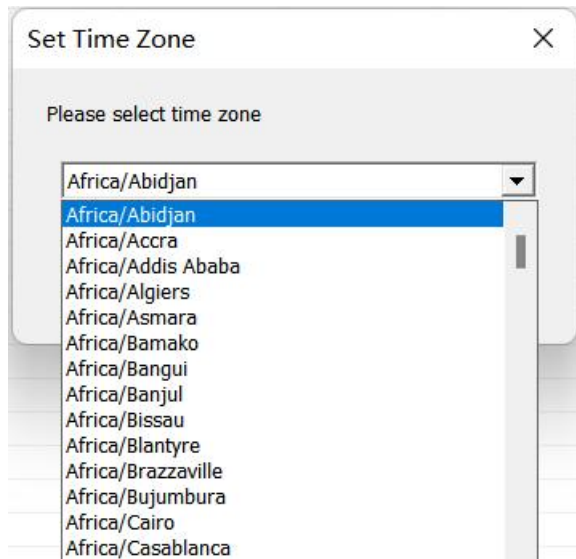
Label	Value
NTP1	0.pool.ntp.org
NTP2	0.openwrt.pool.ntp.org
NTP3	ntp.ix.ru
NTP4	ntp.aliyun.com

In configuring the NTP service, the addresses of the four ntp servers were initially configured by default.

10.15.Set Time Zone

Check the machine IP, and click the "Set time Zone " button. In the pop-up dialog box, you can

choose the corresponding time zone according to the situation of the mine, as shown below:



11.Export data

Click on the [Export] button to export the list information in the current status list box to an external file (.cvs format, which can be opened and edited with Excel).

File name of export data , the default is "current specific time (year, month, hour, minute, second).csv" For example: 20201211141322.csv

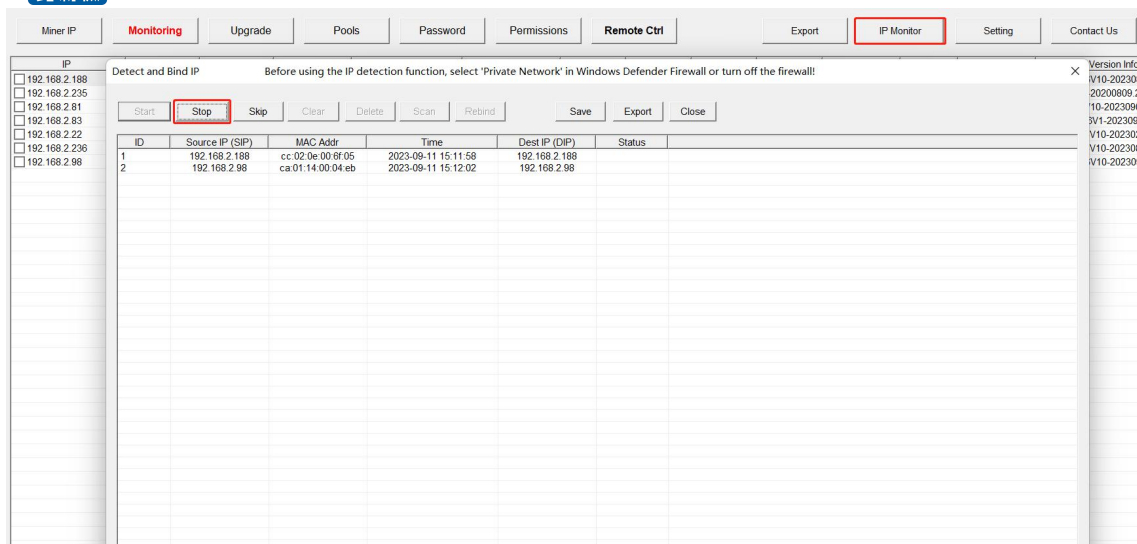
12.Detect and set IP

12.1.Detect IP

Click on the [IP Monitor] button, and then click the [Start] button to start the IP function of the mine detector. At this time, Whats Miner Tool will automatically detect the IP address reported by the mine.

IP reporting method: After starting the miner, press the [IPFOUND] button on the miner for several seconds, and wait for the indicator to flicker, indicating the completion of IP address reporting.

The interface to receive the reported IP is as follows:



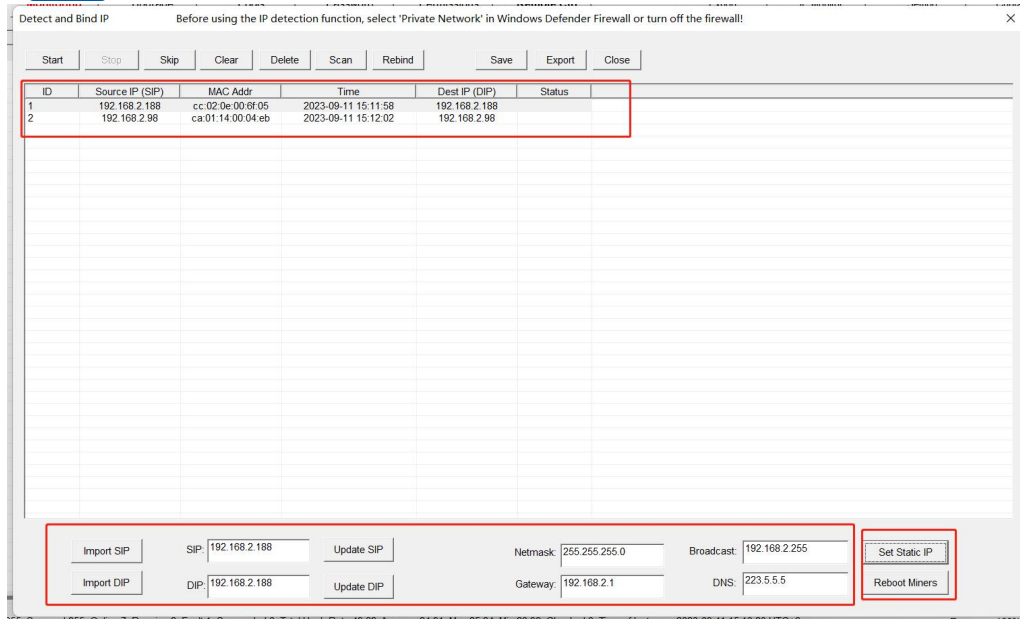
After IP detection is completed, you can click on the [Save] button to save the current data, close the window and do not disappear, or the [Export] button to export the current mine IP list to the file.

12.2.Set Static IP

Setting the source IP of static IP can be selected from the detected IP or imported. Target IP can be imported or manually updated at the target IP in the lower left corner. After changing the target IP and the corresponding subnet mask, gateway, broadcast address, DNS, click on the [Set Static IP] button to configure. When the status shows "Success", the setup succeeds.

Note 1: before setting a static IP, make sure that the mask address, broadcast address, gateway address and DNS address are set correctly.

Note2: after successful setup, the miner will automatically restart and enable the newly set IP address.



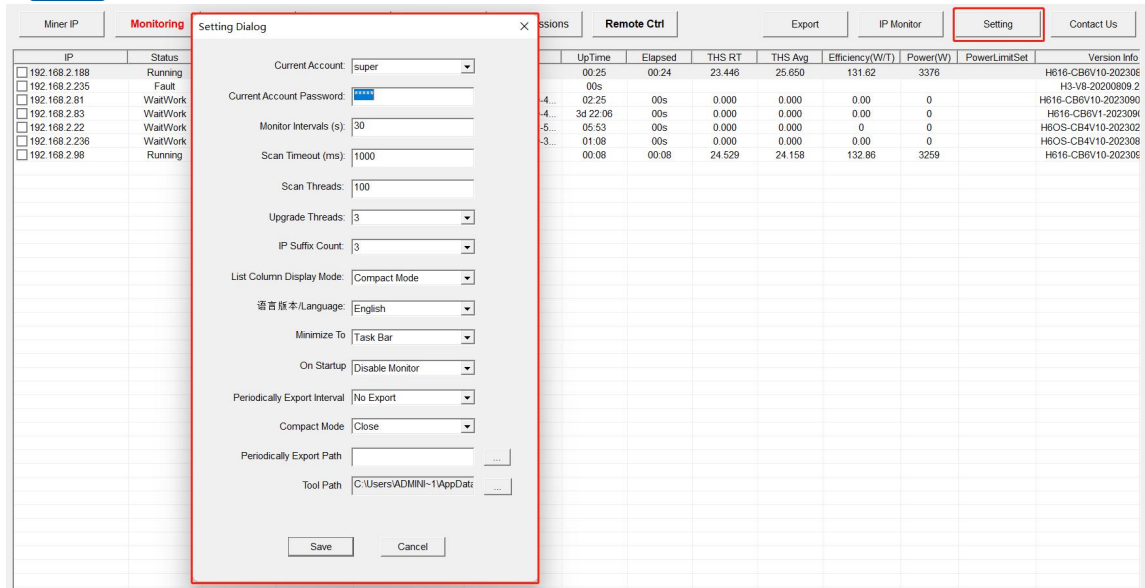
13. Setting windows

13.1.Set window function

Click the "Settings" button, the tool pop-up box to display "Settings window", and you can set it according to your needs:

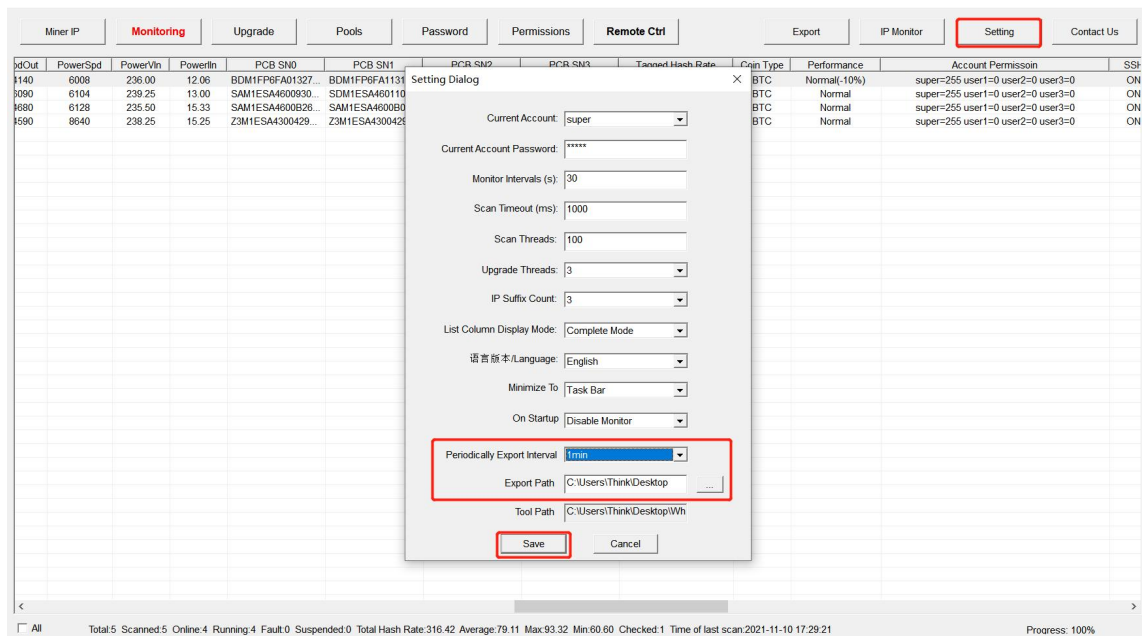
You can choose to log in to a different administrator account, and you need to enter the account password correctly before you can operate as an administrator.

You can also set "automatic monitoring interval", "miner scan timeout", "miner scan concurrency", "firmware upgrade concurrency", "miner IP suffix digits", and "list data display options". You can choose three options: simplified data items, complete data items, and customization. "turn on or off tool automatic updates" supports Chinese version and English version, as shown below:



13.2. Timed export data

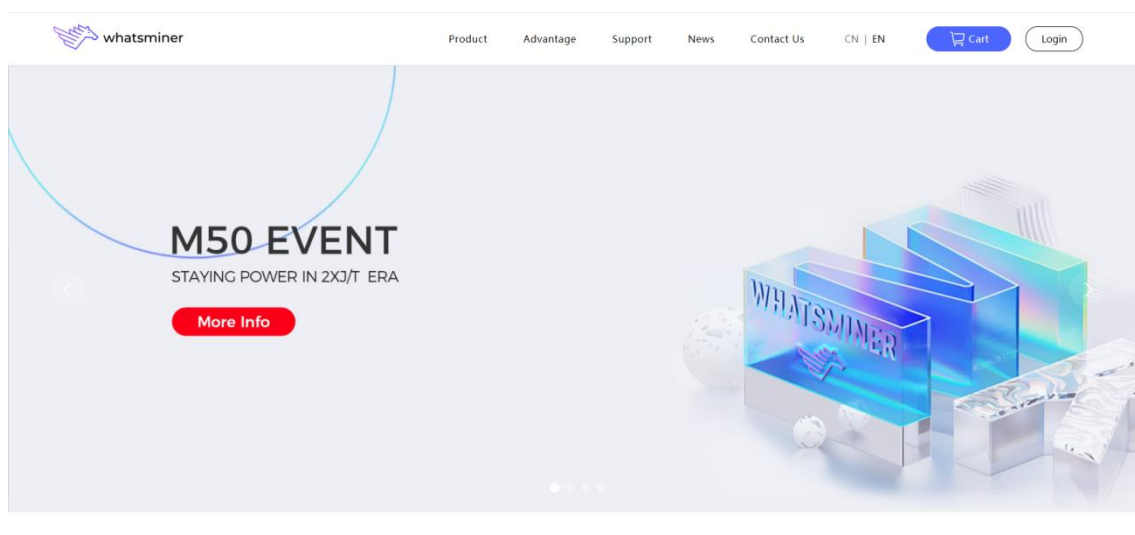
Click the "Settings" button tool pop-up box to display "Settings window", drop down "scheduled Export data interval" to select the export interval, then select the data "Export path", and finally click "Save".



After the operation is completed, the tool data file is saved to the corresponding export path according to the selected export interval.

14.Contact Us

You can go to Whatsminer machine official website to learn more about Whatsminer machine.



15. Others

If you encounter any problems in the use of the tool, please timely give feedback to us, your opinion is the driving motivation for us to move forward, thank you for using WhatsMiner mining machine.

Contact information.

Company website: www.microbt.com or www.whatsminer.com.

Official website email: Support@microbt.com.

Official account of Wechat: [whatsminer](#).

After-sales customer service: [whatsminer_service](#).

Technical support wechat: [Microbt16](#)